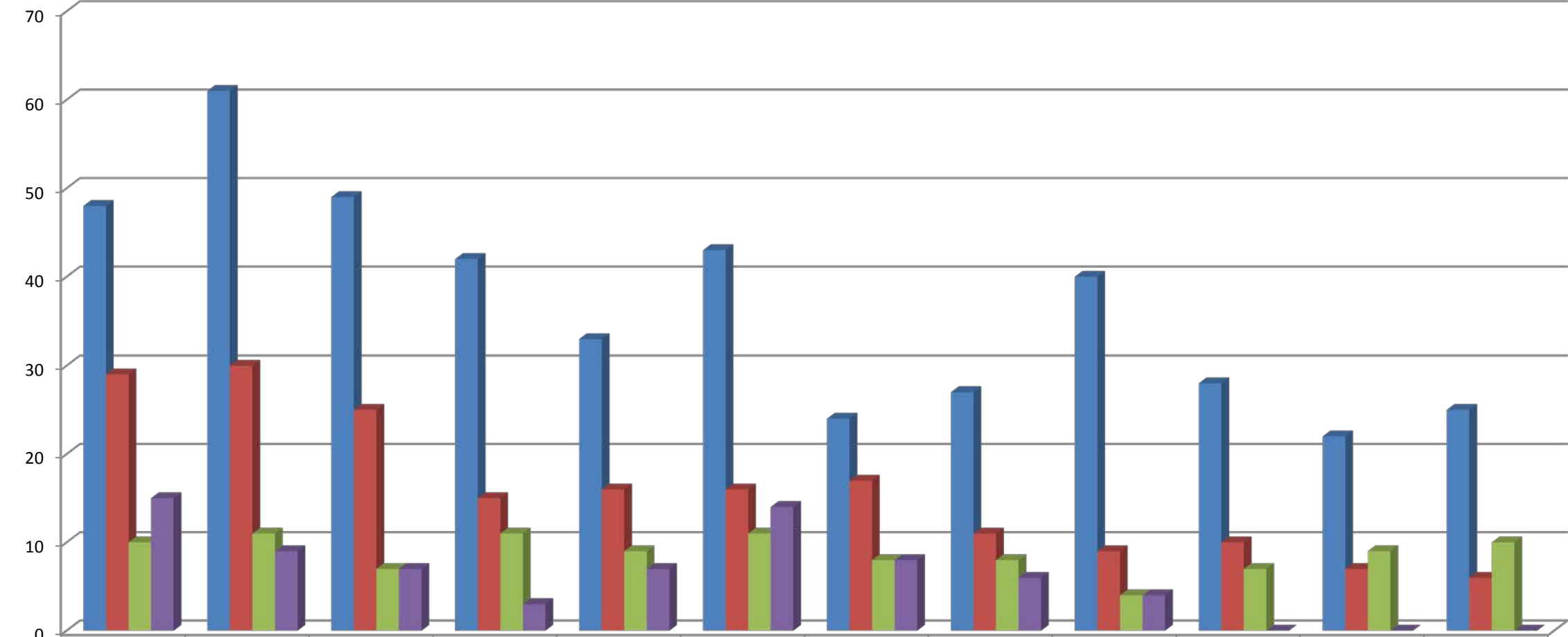


Monthly Comparison of Low Risk to Reoffend Youth 2011 vs. 2012 vs. 2013 vs. 2014



	Jan	Feb	Mar	Apr	May	Jun	July	Aug	Sep	Oct	Nov	Dec
■ 2011	48	61	49	42	33	43	24	27	40	28	22	25
■ 2012	29	30	25	15	16	16	17	11	9	10	7	6
■ 2013	10	11	7	11	9	11	8	8	4	7	9	10
■ 2014	15	9	7	3	7	14	8	6	4	0	0	0