



Briefing Report
Delinquency in Schools Update
(2011-12 vs. 2012-13)
March 2013: *Preliminary Assessment*

Contact:

Mark A. Greenwald, M.J.P.M –
Director of Research & Planning

Issue:

This briefing report summarizes the results of a preliminary analysis of delinquency in Florida's schools during the first eight months of FY 2012-13. For comparative purposes, data from FY 2011-12 is provided to show shifts in arrest patterns by category and county. This is a briefing sheet and is not intended to be a complete or definitive study of all data and issues surrounding delinquency in Florida's schools. Official statistics for FY 2012-13 will be released in the 2013 Delinquency in Schools Report (November, 2013).

Methodology:

All of the data in this briefing sheet was derived from the Juvenile Justice Information System (JJIS) and analyzed by the Bureau of Research and Planning. The methods used to generate the attached figures are identical to those used in the official annual reports, which can be found on the Department's research web site: <http://www.djj.state.fl.us/research/reports/delinquency-in-schools>.

For the purposes of this analysis, delinquency arrests occurring on school grounds are reported. A delinquency arrest occurring on school grounds represents a case referred to the Department for an act of delinquency happening at a school, bus stop or at an officially sanctioned school function (e.g., football game). Please keep in mind that some youth may have been arrested more than once during the study period. These youth are reported separately for each unique school-related arrest presented to the Department.

Highlighted Results:

The results of this analysis indicate that delinquency in schools declined in most Florida jurisdictions throughout FY 2012-13. However, there are still several metrics that indicate room for additional reductions.

- Delinquency in schools declined -15% compared to a similar period during the previous fiscal year.
- Although the statewide number of school arrests declined, there was an increase in some jurisdictions.
 - Delinquency in schools declined or remained the same in 54 of Florida's 67 counties.
- The majority of school-related offenses remain misdemeanor offenses.

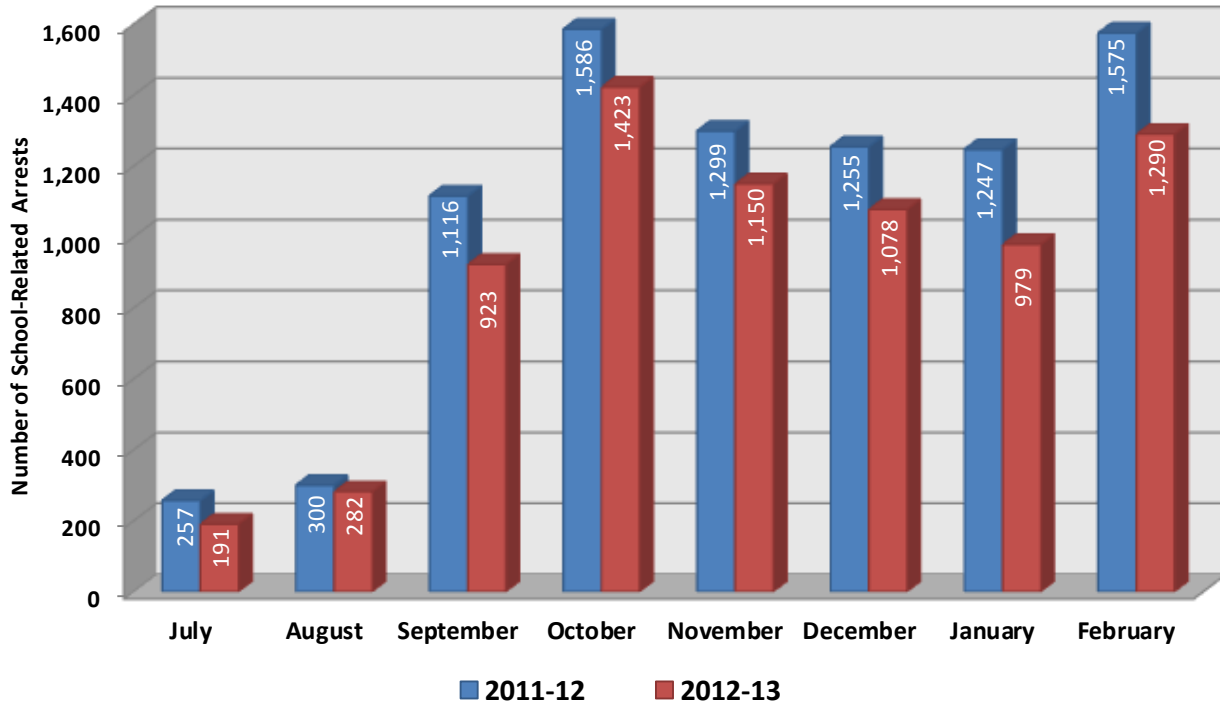
Supplemental Data:

The following pages provide detailed charts and tables by county and offense category. These tables represent delinquency arrests received by the Department and not individual youth. Although the majority of school-related delinquency arrests (approximately 50%) involve a first-time offender, it is possible for youth to have been arrested more than once during the eight month study period.

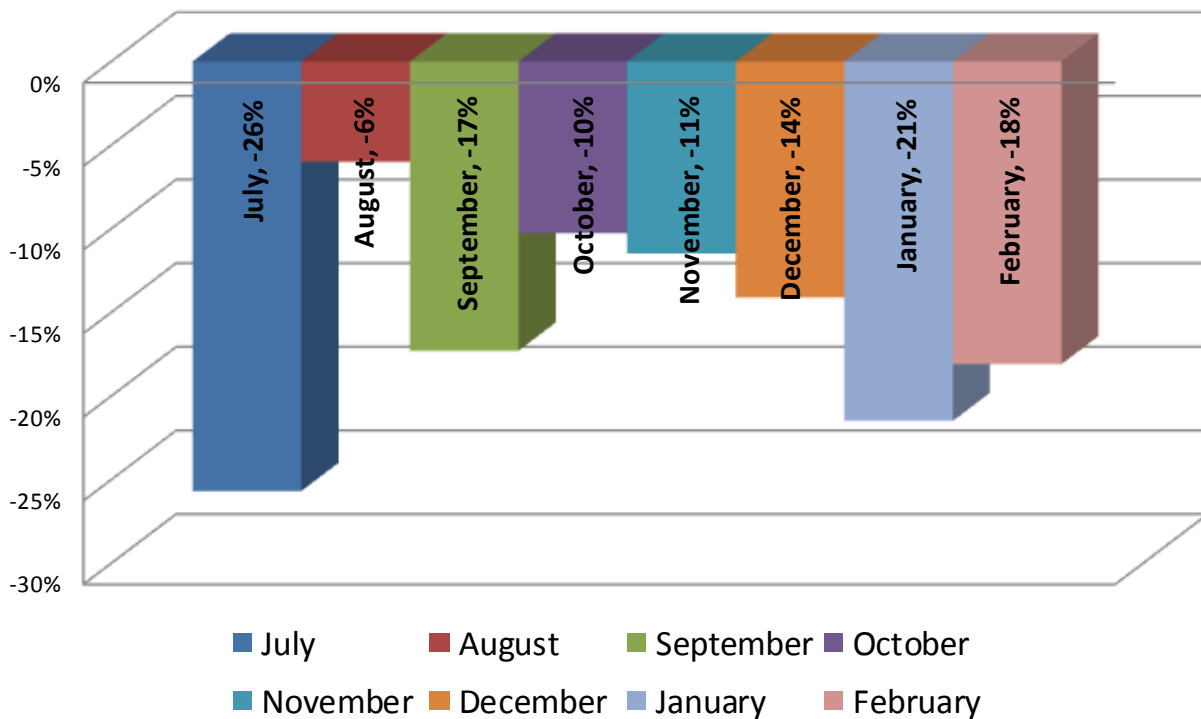
Table of Contents:

School-Related Delinquency Arrests by Month (Chart).....3
Monthly Percentage Change in School-Related Delinquency (Chart).....3
All School Arrest Comparison (FY 2011-12 to FY 2012-13).....4
Misdemeanor School Arrest Comparison (FY 2011-12 to FY 2012-13).....5
Felony School Arrest Comparison (FY 2011-12 to FY 2012-13).....6
School Arrest Rates by County (FY 2011-12 to FY 2012-13).....7

School-Related Delinquency Arrests (2011-12 vs. 2012-13)



Current Year Statewide Percentile Change in School-Related Offending (Compared to FY 2011-12)



School Arrest Comparison (FY 2011-12 to FY 2012-13)
(All School-Related Arrests between July and February)

County	2011-12	2012-13	Change	% Change ¹	County	2011-12	2012-13	Change	% Change ¹
Alachua	208	142	-66	-32%	Lake	170	160	-10	-6%
Baker	29	8	-21	-72%	Lee	169	179	10	6%
Bay	122	103	-19	-16%	Leon	143	122	-21	-15%
Bradford	18	11	-7	-39%	Levy	22	16	-6	-27%
Brevard	188	147	-41	-22%	Liberty	2	1	-1	-50%
Broward	610	562	-48	-8%	Madison	24	19	-5	-21%
Calhoun	6	4	-2	-33%	Manatee	223	119	-104	-47%
Charlotte	64	50	-14	-22%	Marion	161	144	-17	-11%
Citrus	53	36	-17	-32%	Martin	113	61	-52	-46%
Clay	50	67	17	34%	Monroe	20	31	11	55%
Collier	133	82	-51	-38%	Nassau	22	17	-5	-23%
Columbia	32	32	0	0%	Okaloosa	49	37	-12	-24%
Dade	355	417	62	17%	Okeechobee	44	51	7	16%
Desoto	15	15	0	0%	Orange	608	637	29	5%
Dixie	4	4	0	0%	Osceola	209	163	-46	-22%
Duval	323	231	-92	-28%	Palm Beach	453	266	-187	-41%
Escambia	272	229	-43	-16%	Pasco	212	165	-47	-22%
Flagler	61	59	-2	-3%	Pinellas	519	483	-36	-7%
Franklin	2	3	1	50%	Polk	637	494	-143	-22%
Gadsden	13	3	-10	-77%	Putnam	99	85	-14	-14%
Gilchrist	8	5	-3	-38%	St Johns	61	69	8	13%
Glades	9	3	-6	-67%	St Lucie	209	212	3	1%
Gulf	2	8	6	300%	Santa Rosa	29	45	16	55%
Hamilton	5	4	-1	-20%	Sarasota	105	66	-39	-37%
Hardee	9	17	8	89%	Seminole	206	163	-43	-21%
Hendry	62	36	-26	-42%	Sumter	23	17	-6	-26%
Hernando	77	75	-2	-3%	Suwannee	42	28	-14	-33%
Highlands	66	61	-5	-8%	Taylor	7	3	-4	-57%
Hillsborough	662	528	-134	-20%	Union	6	4	-2	-33%
Holmes	4	6	2	50%	Volusia	413	381	-32	-8%
Indian River	78	72	-6	-8%	Wakulla	7	6	-1	-14%
Jackson	12	12	0	0%	Walton	24	20	-4	-17%
Jefferson	2	2	0	0%	Washington	9	8	-1	-11%
Lafayette	1	1	0	0%	Out of State	40	9	-31	-78%
					Total	8,635	7,316	-1,319	-15%

¹ Care should be taken in interpreting percentages derived from fewer than 100 school-related arrests.

School Arrest Comparison (FY 2010-11 to FY 2011-12)
(MISDEMEANOR Arrests between July and February)

County	2011-12	2012-13	Change	% Change ¹	County	2011-12	2012-13	Change	% Change ¹
Alachua	158	91	-67	-42%	Lake	102	102	0	0%
Baker	25	5	-20	-80%	Lee	123	136	13	11%
Bay	102	82	-20	-20%	Leon	97	87	-10	-10%
Bradford	12	10	-2	-17%	Levy	17	10	-7	-41%
Brevard	119	87	-32	-27%	Liberty	0	1	1	100%
Broward	433	367	-66	-15%	Madison	13	16	3	23%
Calhoun	6	2	-4	-67%	Manatee	168	89	-79	-47%
Charlotte	56	37	-19	-34%	Marion	115	102	-13	-11%
Citrus	33	23	-10	-30%	Martin	97	48	-49	-51%
Clay	37	49	12	32%	Monroe	13	18	5	38%
Collier	95	71	-24	-25%	Nassau	7	12	5	71%
Columbia	20	23	3	15%	Okaloosa	34	29	-5	-15%
Dade	135	156	21	16%	Okeechobee	38	34	-4	-11%
Desoto	10	9	-1	-10%	Orange	383	413	30	8%
Dixie	1	2	1	100%	Osceola	140	107	-33	-24%
Duval	147	84	-63	-43%	Palm Beach	287	186	-101	-35%
Escambia	192	163	-29	-15%	Pasco	150	107	-43	-29%
Flagler	51	45	-6	-12%	Pinellas	364	323	-41	-11%
Franklin	1	1	0	0%	Polk	472	360	-112	-24%
Gadsden	8	0	-8	-100%	Putnam	64	49	-15	-23%
Gilchrist	8	1	-7	-88%	St Johns	36	53	17	47%
Glades	6	2	-4	-67%	St Lucie	166	153	-13	-8%
Gulf	1	7	6	600%	Santa Rosa	19	31	12	63%
Hamilton	5	1	-4	-80%	Sarasota	82	37	-45	-55%
Hardee	8	15	7	88%	Seminole	145	97	-48	-33%
Hendry	48	25	-23	-48%	Sumter	14	12	-2	-14%
Hernando	69	62	-7	-10%	Suwannee	29	17	-12	-41%
Highlands	40	49	9	23%	Taylor	1	1	0	0%
Hillsborough	426	299	-127	-30%	Union	5	2	-3	-60%
Holmes	2	4	2	100%	Volusia	301	283	-18	-6%
Indian River	62	54	-8	-13%	Wakulla	6	5	-1	-17%
Jackson	9	8	-1	-11%	Walton	19	18	-1	-5%
Jefferson	2	2	0	0%	Washington	7	6	-1	-14%
Lafayette	1	1	0	0%	Out of State	18	3	-15	-83%
					Total	5,860	4,784	-1,076	-18%

¹ Care should be taken in interpreting percentages derived from fewer than 100 school-related arrests.

School Arrest Comparison (FY 2010-11 to FY 2011-12)
(FELONY Arrests between July and February)

County	2011-12	2012-13	Change	% Change ¹	County	2011-12	2012-13	Change	% Change ¹
Alachua	49	51	2	4%	Lake	67	58	-9	-13%
Baker	4	3	-1	-25%	Lee	46	42	-4	-9%
Bay	20	21	1	5%	Leon	46	35	-11	-24%
Bradford	6	1	-5	-83%	Levy	5	6	1	20%
Brevard	69	60	-9	-13%	Liberty	2	0	-2	-100%
Broward	175	193	18	10%	Madison	11	3	-8	-73%
Calhoun	0	2	2	200%	Manatee	51	25	-26	-51%
Charlotte	8	13	5	63%	Marion	46	41	-5	-11%
Citrus	20	13	-7	-35%	Martin	16	12	-4	-25%
Clay	13	18	5	38%	Monroe	7	13	6	86%
Collier	37	11	-26	-70%	Nassau	14	5	-9	-64%
Columbia	12	9	-3	-25%	Okaloosa	15	8	-7	-47%
Dade	218	259	41	19%	Okeechobee	6	17	11	183%
Desoto	5	6	1	20%	Orange	224	224	0	0%
Dixie	3	2	-1	-33%	Osceola	69	56	-13	-19%
Duval	176	147	-29	-16%	Palm Beach	165	79	-86	-52%
Escambia	80	65	-15	-19%	Pasco	61	58	-3	-5%
Flagler	10	14	4	40%	Pinellas	153	159	6	4%
Franklin	1	2	1	100%	Polk	162	132	-30	-19%
Gadsden	5	3	-2	-40%	Putnam	34	36	2	6%
Gilchrist	0	4	4	400%	St Johns	25	16	-9	-36%
Glades	3	1	-2	-67%	St Lucie	42	59	17	40%
Gulf	1	1	0	0%	Santa Rosa	10	14	4	40%
Hamilton	0	3	3	300%	Sarasota	19	24	5	26%
Hardee	1	2	1	100%	Seminole	60	65	5	8%
Hendry	14	11	-3	-21%	Sumter	9	5	-4	-44%
Hernando	8	13	5	63%	Suwannee	13	11	-2	-15%
Highlands	26	12	-14	-54%	Taylor	6	2	-4	-67%
Hillsborough	236	227	-9	-4%	Union	1	2	1	100%
Holmes	2	2	0	0%	Volusia	111	96	-15	-14%
Indian River	14	18	4	29%	Wakulla	1	1	0	0%
Jackson	3	4	1	33%	Walton	5	2	-3	-60%
Jefferson	0	0	0	N/A	Washington	2	2	0	0%
Lafayette	0	0	0	N/A	Out of State	22	6	-16	-73%
					Total	2,745	2,505	-240	-9%

¹ Care should be taken in interpreting percentages derived from fewer than 100 school-related arrests.

School Arrest Rates by County
FY 2012-13 (as of February 28, 2013)

County	Student Population ¹	School Arrests ²	Rate ³	County	Student Population ¹	School Arrests ²	Rate ³
Alachua	14,218	142	10	Lake	21,350	160	7
Baker	2,422	8	3	Lee	43,075	179	4
Bay	13,171	103	8	Leon	16,509	122	7
Bradford	1,552	11	7	Levy	2,894	16	6
Brevard	38,237	147	4	Liberty	721	1	1
Broward	138,307	562	4	Madison	1,369	19	14
Calhoun	1,086	4	4	Manatee	22,523	119	5
Charlotte	9,491	50	5	Marion	22,408	144	6
Citrus	8,504	36	4	Martin	9,985	61	6
Clay	19,814	67	3	Monroe	4,336	31	7
Collier	22,370	82	4	Nassau	6,059	17	3
Columbia	4,717	32	7	Okaloosa	15,501	37	2
Dade	185,678	417	2	Okeechobee	3,369	51	15
Desoto	2,197	15	7	Orange	94,328	637	7
Dixie	943	4	4	Osceola	29,482	163	6
Duval	62,141	231	4	Palm Beach	94,096	266	3
Escambia	20,293	229	11	Pasco	35,439	165	5
Flagler	7,139	59	8	Pinellas	56,005	483	9
Franklin	607	3	5	Polk	48,915	494	10
Gadsden	2,591	3	1	Putnam	5,302	85	16
Gilchrist	1,333	5	4	St Johns	17,369	69	4
Glades	627	3	5	St Lucie	20,979	212	10
Gulf	1,052	8	8	Santa Rosa	14,001	45	3
Hamilton	747	4	5	Sarasota	22,209	66	3
Hardee	2,392	17	7	Seminole	35,681	163	5
Hendry	3,404	36	11	Sumter	3,893	17	4
Hernando	12,378	75	6	Suwannee	3,070	28	9
Highlands	6,162	61	10	Taylor	1,376	3	2
Hillsborough	101,388	528	5	Union	1,197	4	3
Holmes	1,668	6	4	Volusia	33,403	381	11
Indian River	9,489	72	8	Wakulla	2,449	6	2
Jackson	3,480	12	3	Walton	3,745	20	5
Jefferson	460	2	4	Washington	1,804	8	4
Lafayette	560	1	2	Out of State	NA	9	N/A
				TOTAL	1,395,460	7,316	5

¹ Source: Florida Department of Education, 2011-12 Survey 2 Data. Population of public school students in grades 6-12 during the 2011-12 school year (most recent population data available).

¹ Source: Source: Florida Department of Juvenile Justice, Juvenile Justice Information System (JJIS).

³ Number of school-related arrests processed by DJJ per 1,000 students ((School Arrests/Student Population)*1,000).