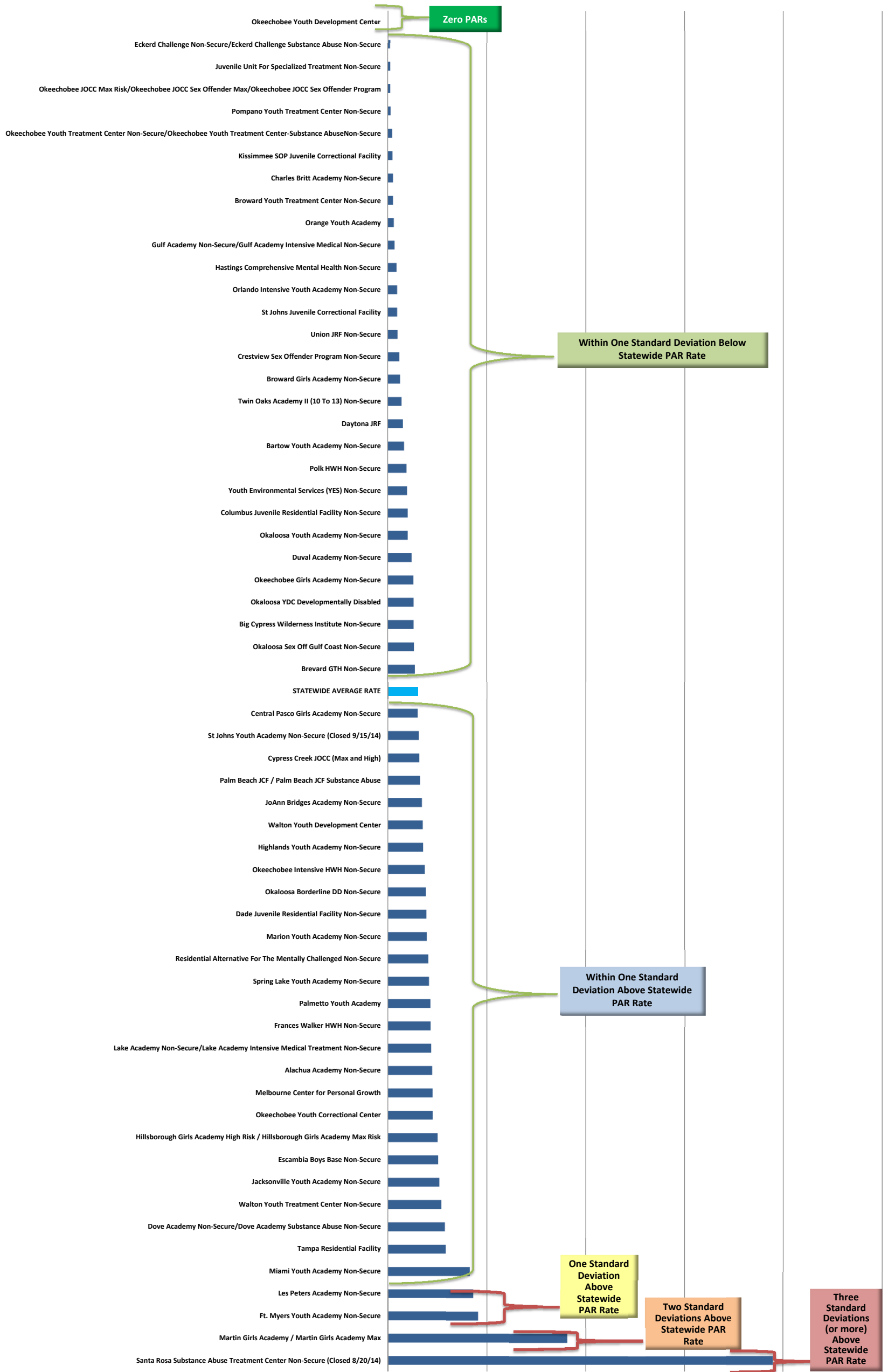




Residential 9-month PAR Data (Level 2 & Level 3) for FY 2014-15 Performance Rankings

Low Rates ← → High Rates



Residential Program	PAR Rate FY14-15 1st 9 mos.
Okeechobee Youth Development Center	0.000
Eckerd Challenge Non-Secure/Eckerd Challenge Substance Abuse Non-Secure	0.120
Juvenile Unit For Specialized Treatment Non-Secure	0.130
Okeechobee JOCC Max Risk/Okeechobee JOCC Sex Offender Max/Okeechobee JOCC Sex Offender Program	0.130
Pompano Youth Treatment Center Non-Secure	0.150
Okeechobee Youth Treatment Center Non-Secure/Okeechobee Youth Treatment Center-Substance Abuse Non-Secure	0.230
Kissimmee SOP Juvenile Correctional Facility	0.240
Charles Britt Academy Non-Secure	0.270
Broward Youth Treatment Center Non-Secure	0.270
Orange Youth Academy	0.310
Gulf Academy Non-Secure/Gulf Academy Intensive Medical Non-Secure	0.350
Hastings Comprehensive Mental Health Non-Secure	0.450
Orlando Intensive Youth Academy Non-Secure	0.480
St Johns Juvenile Correctional Facility	0.480
Union JRF Non-Secure	0.500
Crestview Sex Offender Program Non-Secure	0.590
Broward Girls Academy Non-Secure	0.630
Twin Oaks Academy II (10 To 13) Non-Secure	0.700
Daytona JRF	0.770
Bartow Youth Academy Non-Secure	0.830
Polk HWH Non-Secure	0.950
Youth Environmental Services (YES) Non-Secure	0.980
Columbus Juvenile Residential Facility Non-Secure	1.010
Okaloosa Youth Academy Non-Secure	1.010
Duval Academy Non-Secure	1.210
Okeechobee Girls Academy Non-Secure	1.300
Okaloosa YDC Developmentally Disabled	1.310
Big Cypress Wilderness Institute Non-Secure	1.310
Okaloosa Sex Off Gulf Coast Non-Secure	1.330
Brevard GTH Non-Secure	1.370
STATEWIDE AVERAGE RATE	1.507
Central Pasco Girls Academy Non-Secure	1.510
St Johns Youth Academy Non-Secure (Closed 9/15/14)	1.560
Cypress Creek JOCC (Max and High)	1.590
Palm Beach JCF / Palm Beach JCF Substance Abuse	1.630
JoAnn Bridges Academy Non-Secure	1.720
Walton Youth Development Center	1.760
Highlands Youth Academy Non-Secure	1.780
Okeechobee Intensive HWH Non-Secure	1.870
Okaloosa Borderline DD Non-Secure	1.920
Dade Juvenile Residential Facility Non-Secure	1.950
Marion Youth Academy Non-Secure	1.960
Residential Alternative For The Mentally Challenged Non-Secure	2.040
Spring Lake Youth Academy Non-Secure	2.080
Palmetto Youth Academy	2.150
Frances Walker HWH Non-Secure	2.160
Lake Academy Non-Secure/Lake Academy Intensive Medical Treatment Non-Secure	2.190
Alachua Academy Non-Secure	2.240
Melbourne Center for Personal Growth	2.260
Okeechobee Youth Correctional Center	2.270
Hillsborough Girls Academy High Risk / Hillsborough Girls Academy Max Risk	2.510
Escambia Boys Base Non-Secure	2.540
Jacksonville Youth Academy Non-Secure	2.600
Walton Youth Treatment Center Non-Secure	2.700
Dove Academy Non-Secure/Dove Academy Substance Abuse Non-Secure	2.880
Tampa Residential Facility	2.920
Miami Youth Academy Non-Secure	4.140
Les Peters Academy Non-Secure	4.310
Ft. Myers Youth Academy Non-Secure	4.560
Martin Girls Academy / Martin Girls Academy Max	9.070
Santa Rosa Substance Abuse Treatment Center Non-Secure (Closed 8/20/14)	19.480
Statewide Average	1.51
Standard Deviation (sd)	2.72
(2 x sd)	5.44
1 (sd) Below Statewide Average **	-1.21
2 (sd) Below Statewide Average**	-3.93
1 (sd) Above Statewide Average	4.23
2 (sd) Above Statewide Average	6.94
Statewide Average	1.51
Standard Deviation (sd)	2.72
(2 x sd)	5.44
Within 1 (sd) Below Statewide Average Range	0 - 1.509
Within 1 (sd) Above Statewide Average Range	1.510-4.23
1 (sd) Below Statewide Average Range	n/a
2 (sd) Below Statewide Average Range**	n/a
3 (sd) Below Statewide Average	n/a
1 (sd) Above Statewide Average Range	4.231-6.94
2 (sd) Above Statewide Average Range	6.941-9.66
3 (sd) (or more) Above Statewide Average Range	9.661 and above